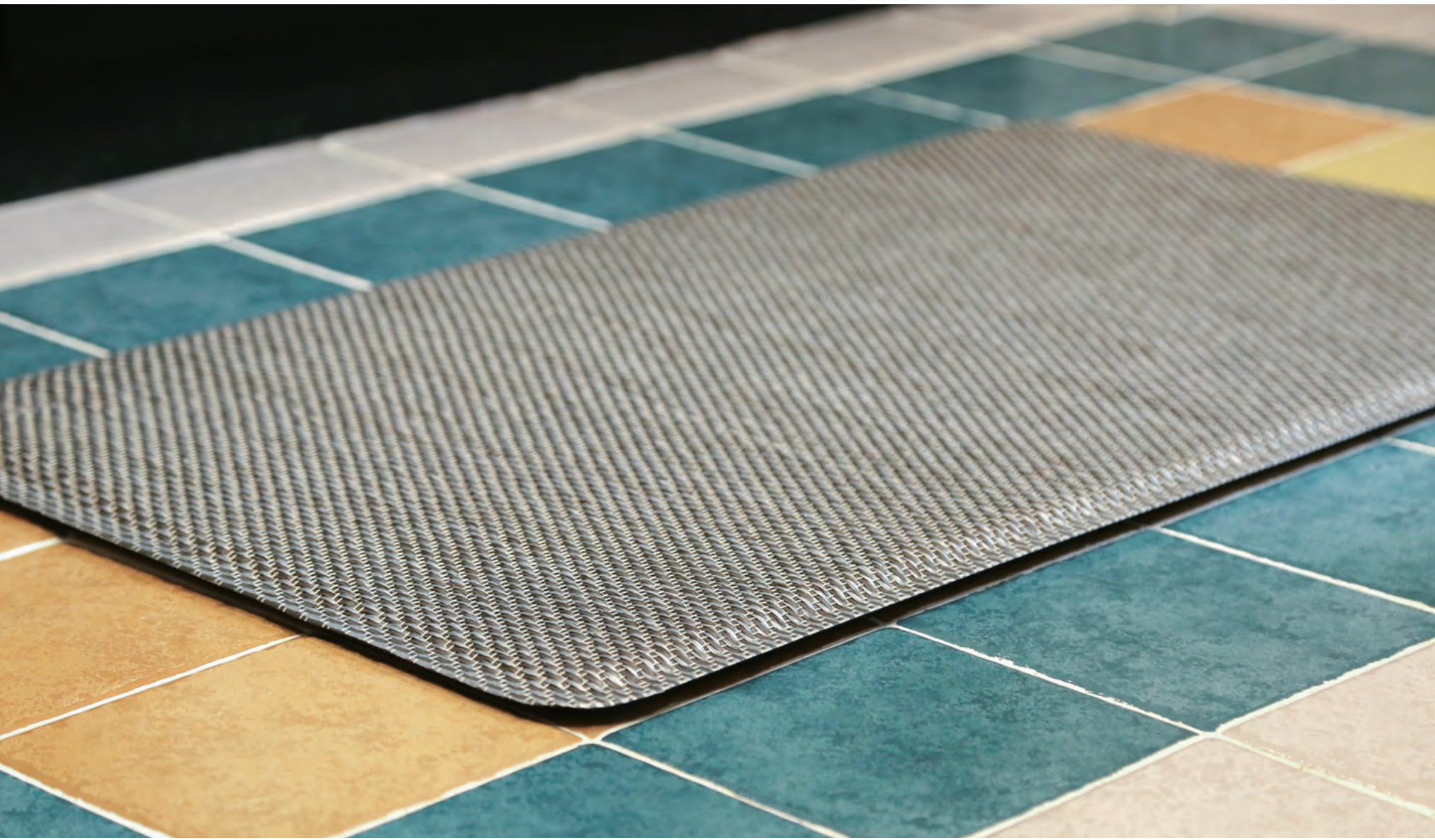




ECO BEAUTY

— WEAVE YOUR DEARMS —



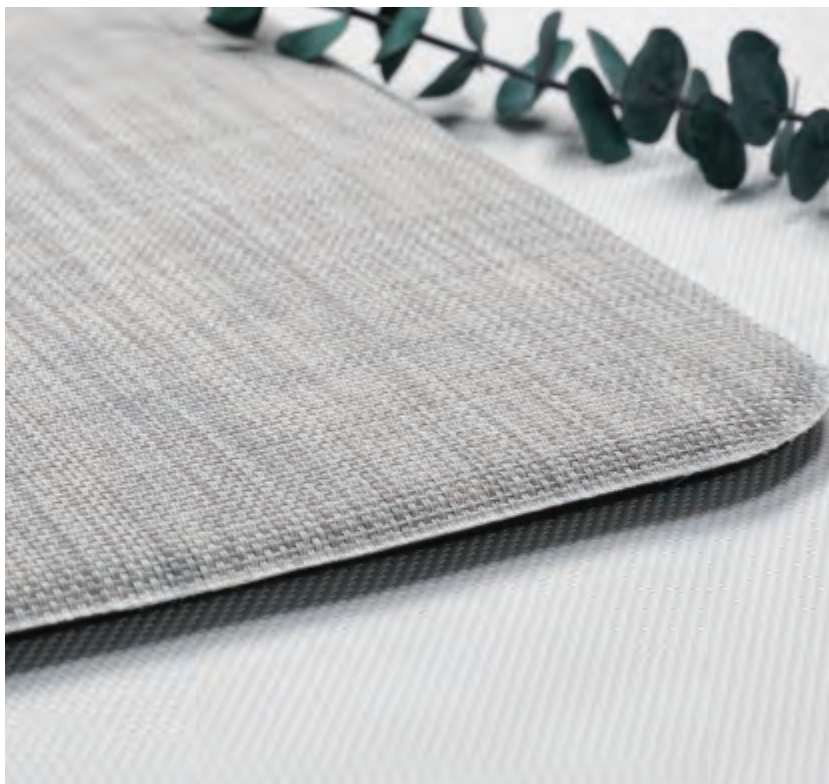
Anti Fatigue Mats

Anti fatigue mats is suitable for multiple scenes, like in kitchen, bathroom, living room, cashier counters or anywhere as you like.

We have wide selection of mats for you, including different woven patterns, colours and sizes. Its thickness is 6mm to 20mm and lets people feel comfortable underfoot.



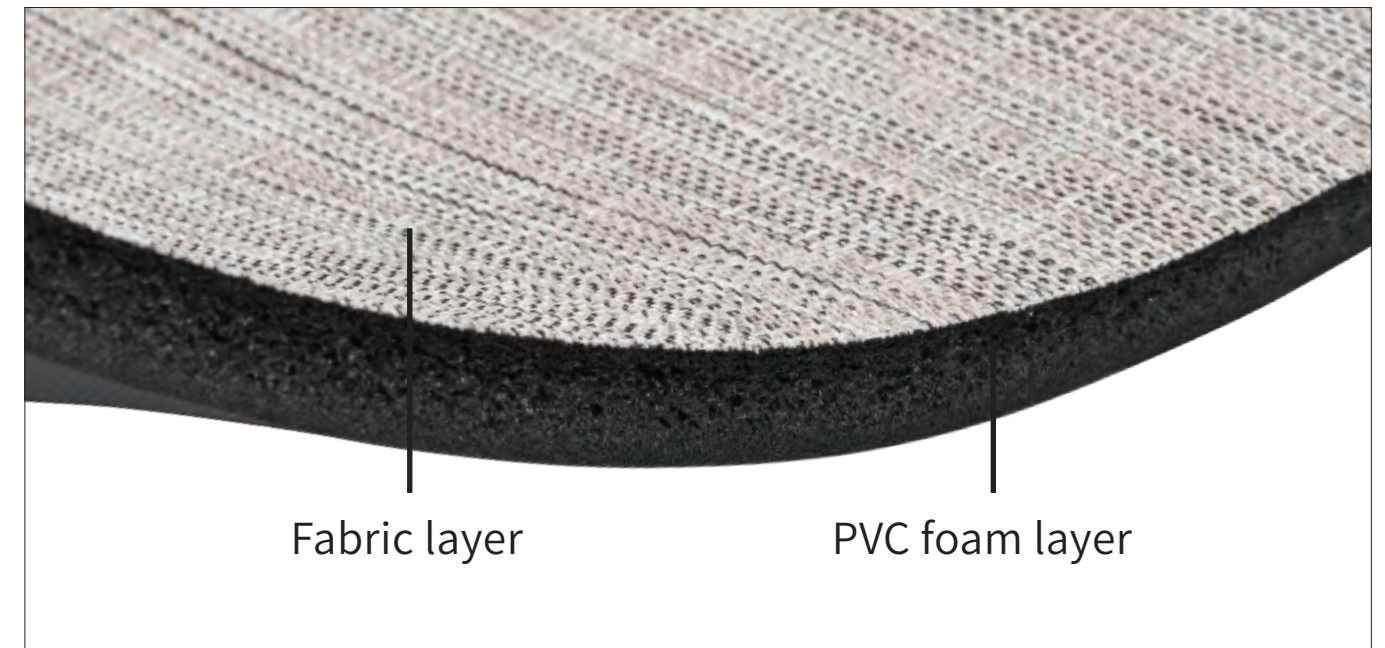
Welcome to contact us if you have any questions and welcome to visit our exhibitions.





PVC Foam Backing for Anti Fatigue Mats

The product structure is fabric layer and PVC foam layer.
This innovation is soft and feel comfortable underfoot .



Edge wrapping method: Over lock



15mm Thickness :



46x76cm



46x120cm



50x80cm



50x98cm



50x115cm



50x120cm



50x140cm



12mm Thickness :

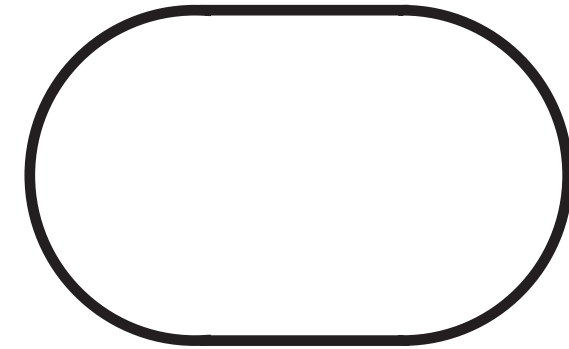


45x75cm



50x80cm

Ellipse:

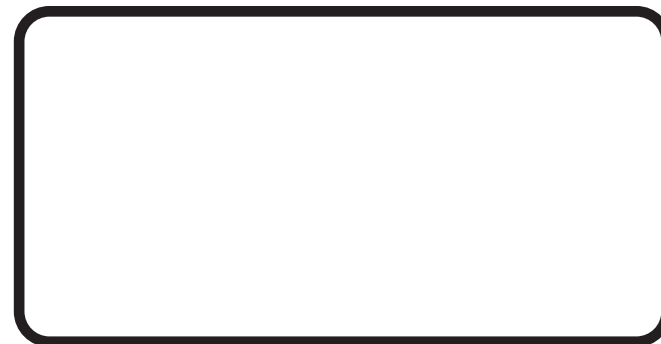


50 × 80cm

20mm Thickness :

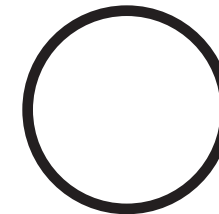


45x110cm

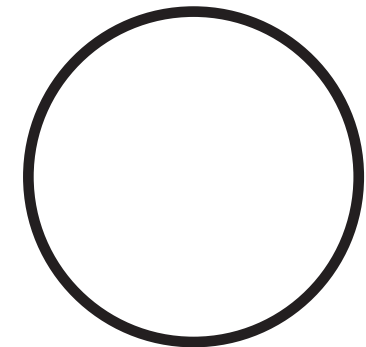


50x98cm

Circle:



Φ30cm



Φ50cm

Customize size available. Max width 80cm, max length 140cm.

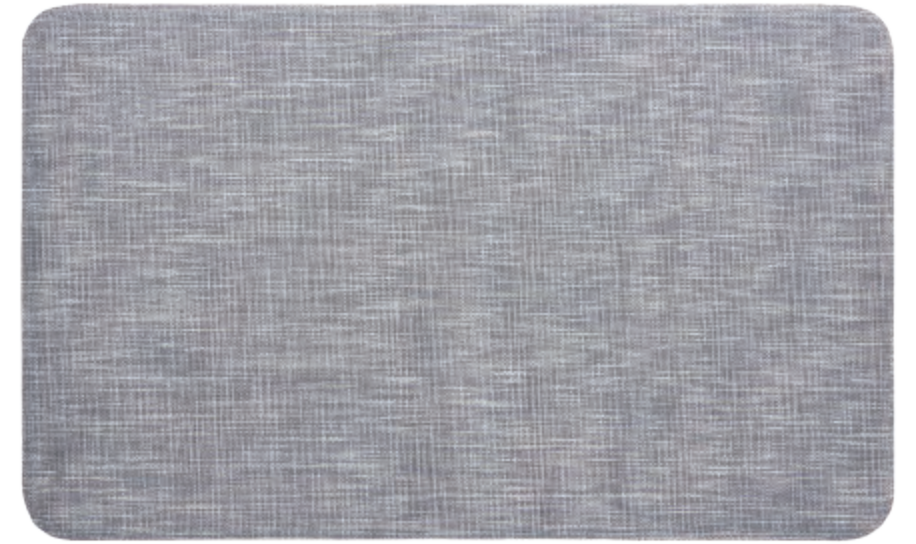
50 × 80cm



Eco-21019



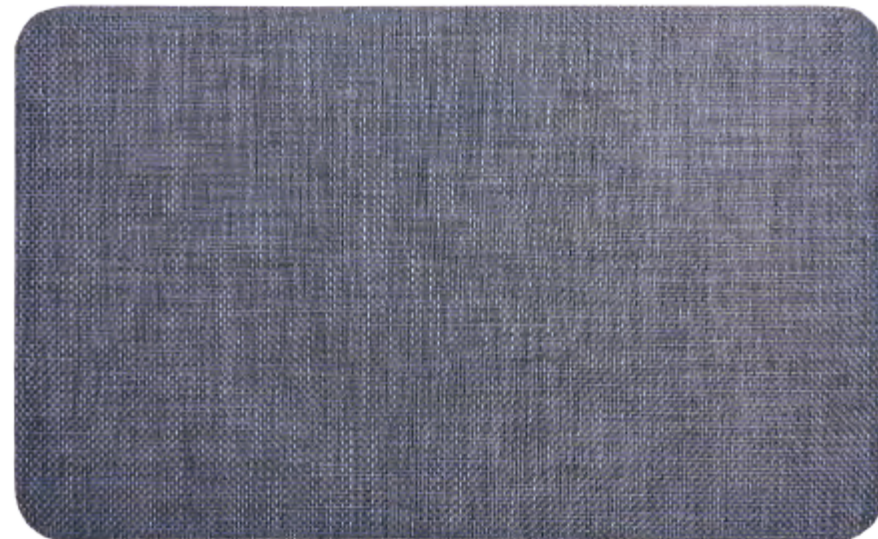
Eco-21018



Eco-22014



Eco-52024



Eco-44042



Eco-44010

46 × 125cm



Eco-8074H



Eco-8072-2



Eco-511009BP



Eco-511015BP

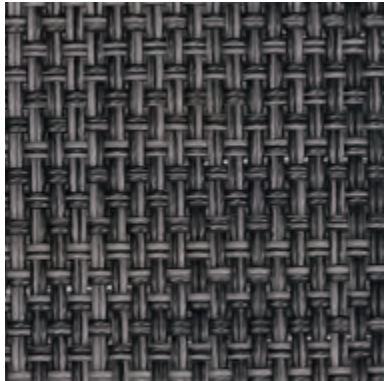


Eco-511005BP

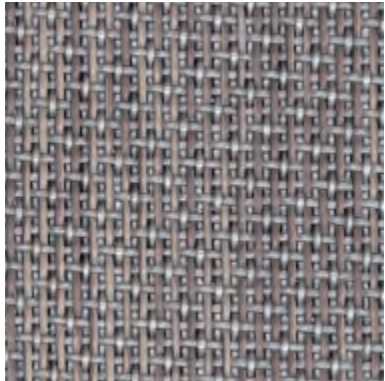


Eco-511010BP

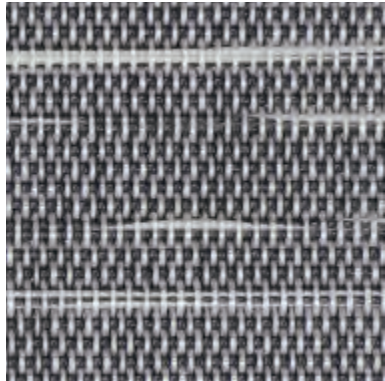
DELUX



ECO-21013



ECO-21014



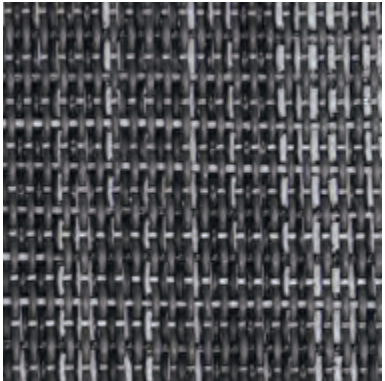
ECO-21042



ECO-21038



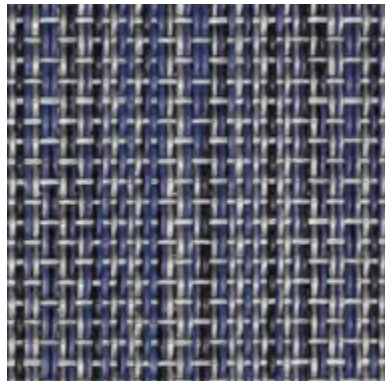
ECO-21022



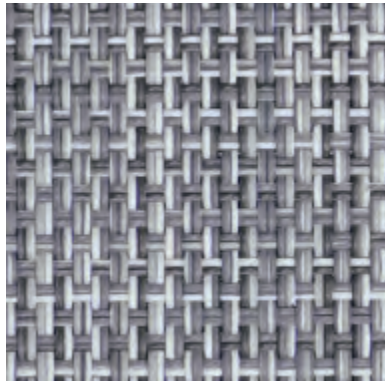
ECO-21020



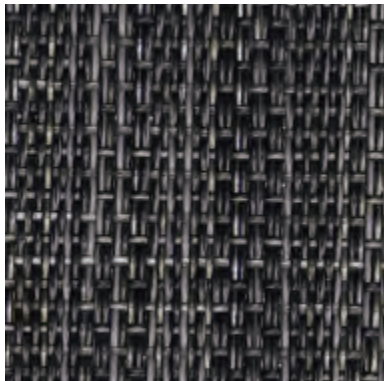
ECO-21019



ECO-21016



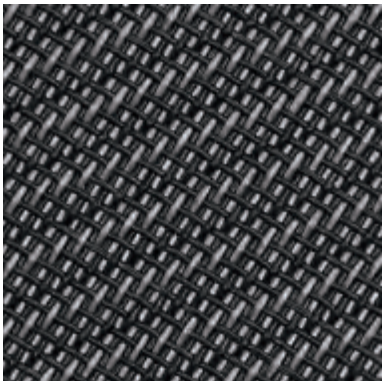
ECO-22014



ECO-22015



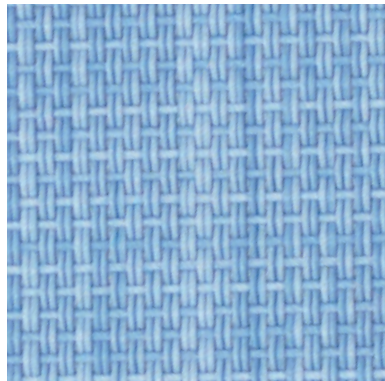
ECO-22016



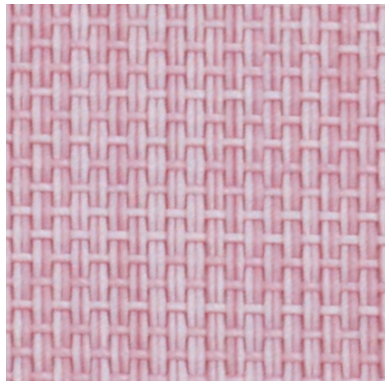
ECO-21004



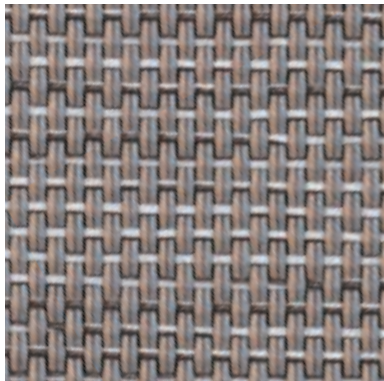
ECO-22011



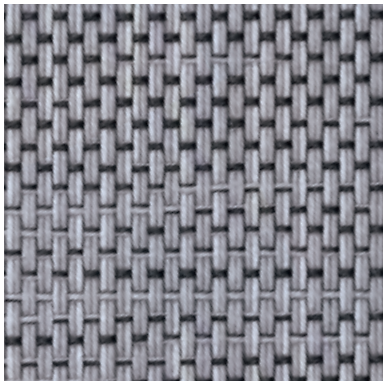
ECO-21046



ECO-21045



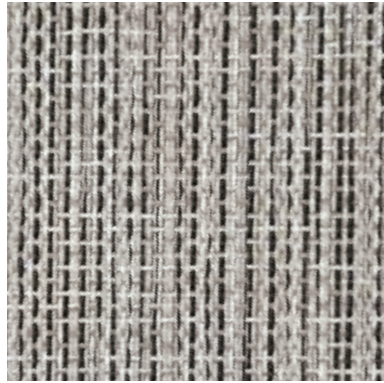
ECO-21027



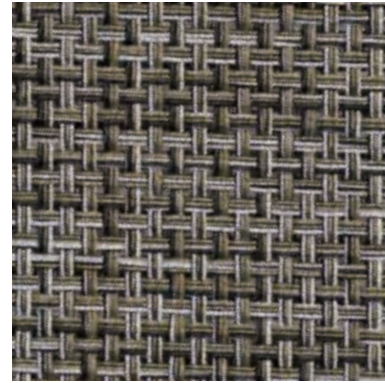
ECO-21039



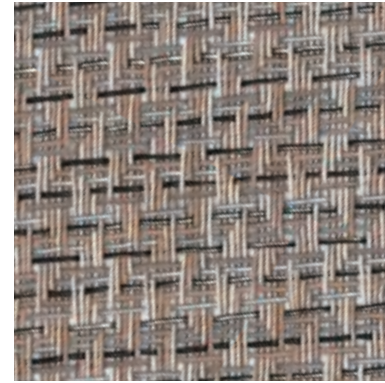
ECO-21010



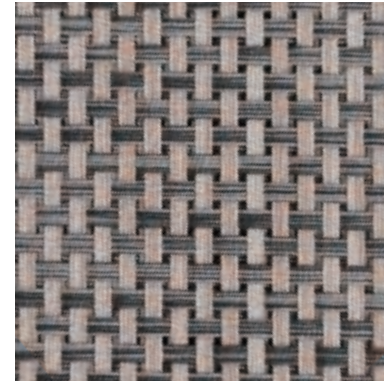
ECO-21018



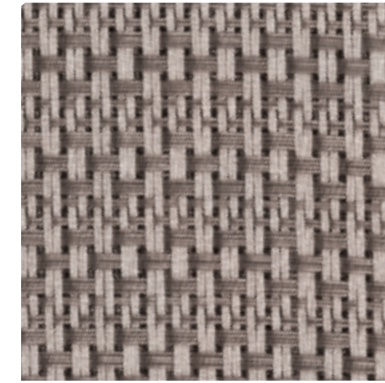
ECO-33001



ECO-43003-2



ECO-44016

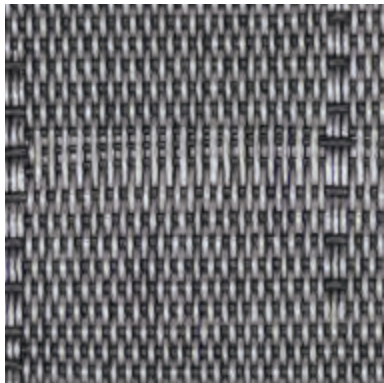


ECO-44028

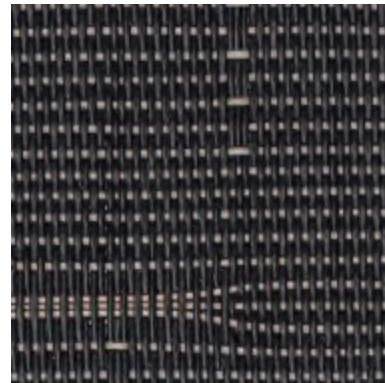


ECO-44029

JACQUARD



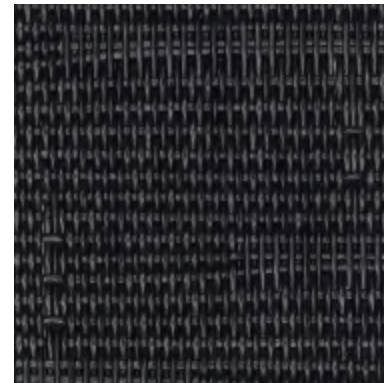
ECO-8014H-4



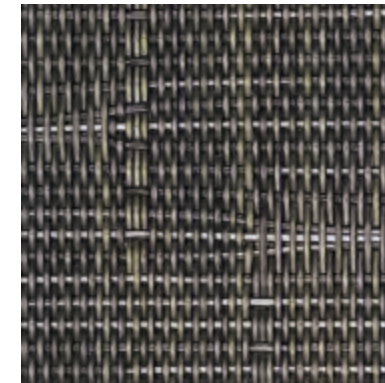
ECO-8014H-5



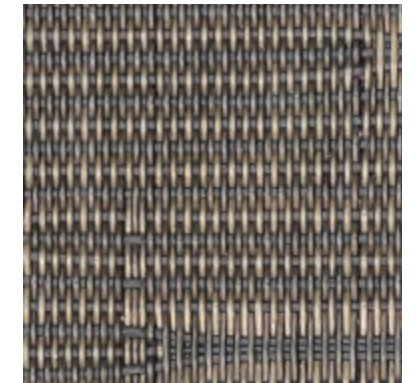
ECO-8014H-8



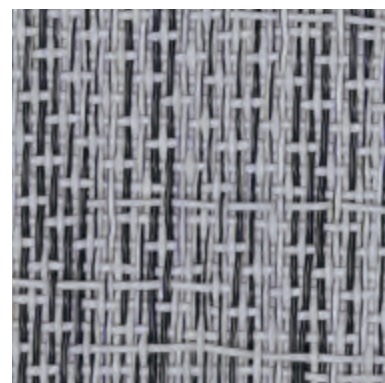
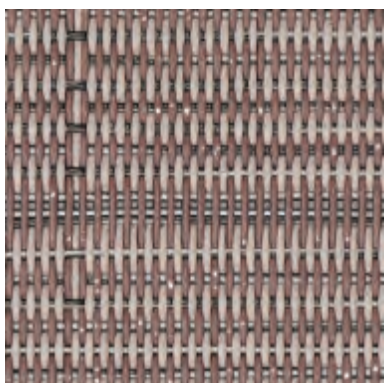
ECO-8014H-11



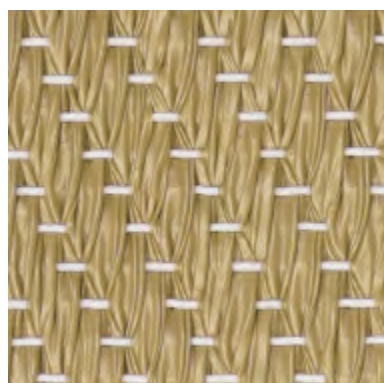
ECO-8014H-17



ECO-8014H-18



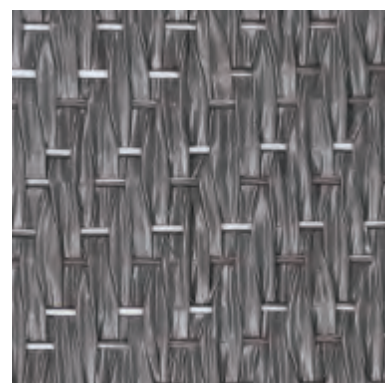
ELEGANT



ECO-51002BP



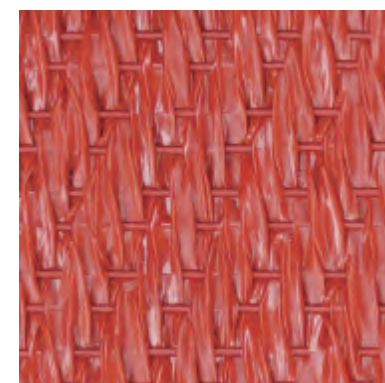
ECO-51004BP



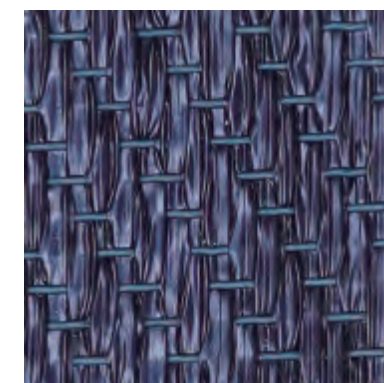
ECO-5100BP-1



ECO-51009BP



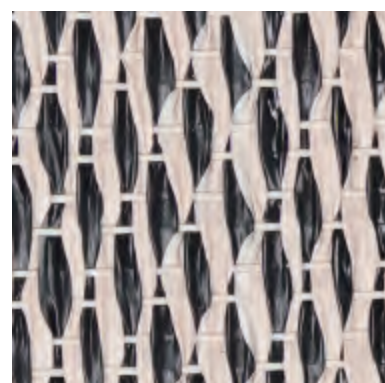
ECO-51012BP



ECO-51013BP



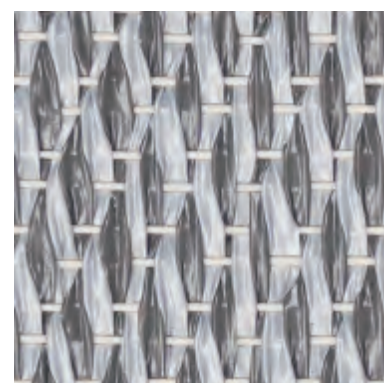
ECO-51023BP



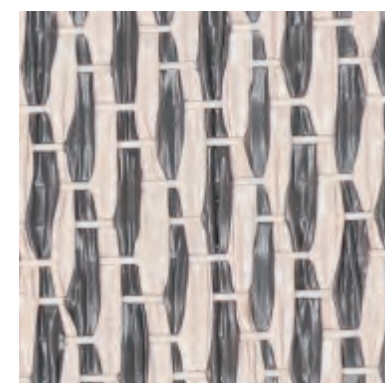
ECO-52001BP



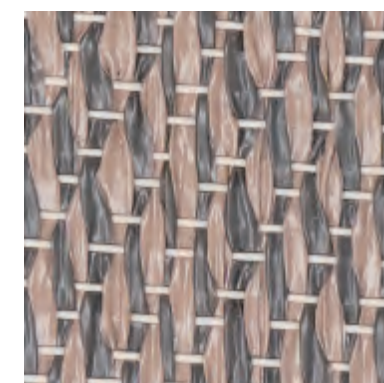
ECO-52008BP-1



ECO-51002BP



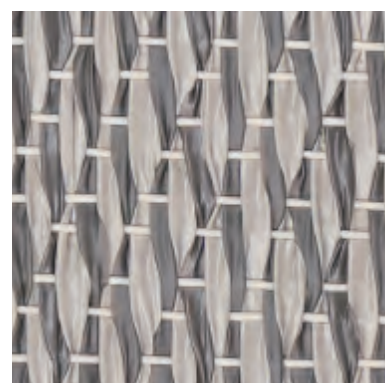
ECO-51004BP



ECO-52006BP



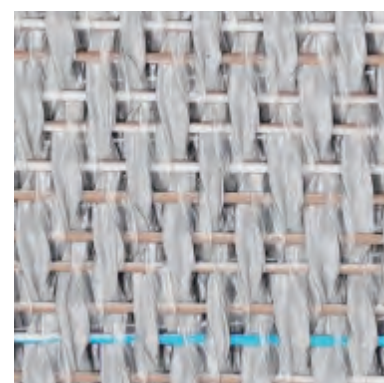
ECO-52011BP



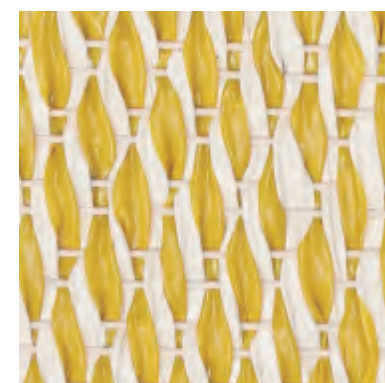
ECO-52028BP



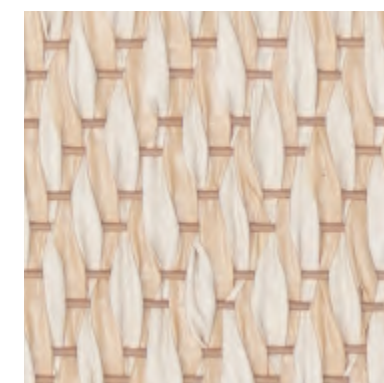
ECO-52029BP



ECO-52032BP

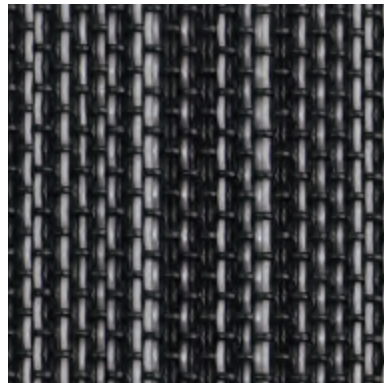


ECO-52033BP

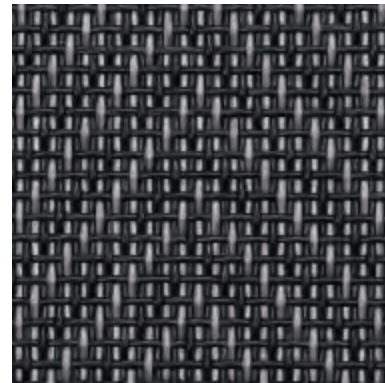


ECO-52038BP

Popular Model



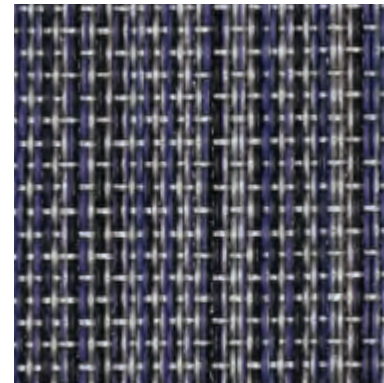
ECO-21001



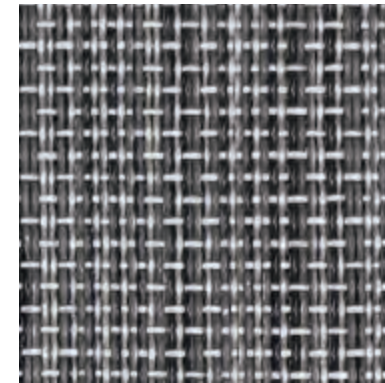
ECO-21004



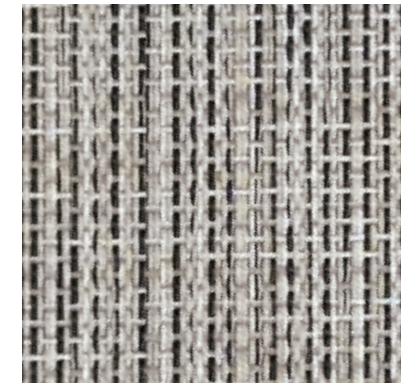
ECO-21007



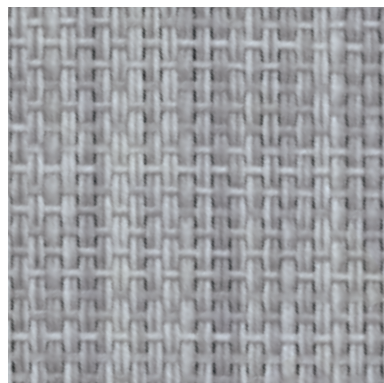
ECO-21016



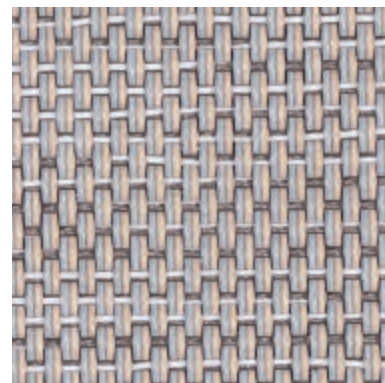
ECO-21017



ECO-21018



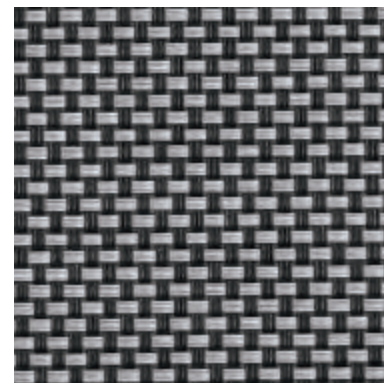
ECO-21019



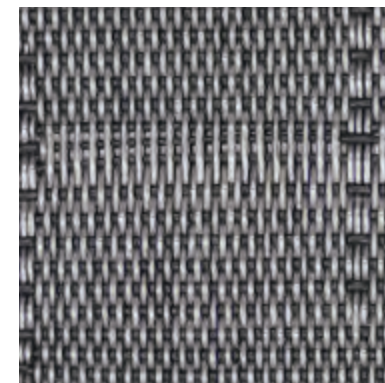
ECO-21027



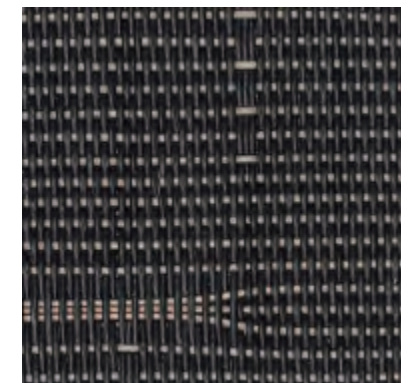
ECO-21030



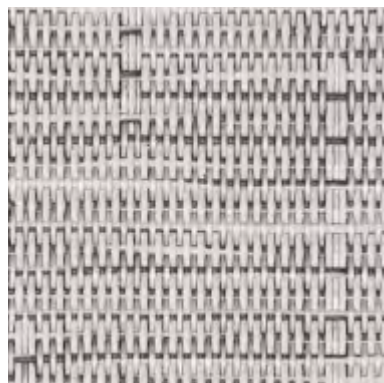
ECO-44005



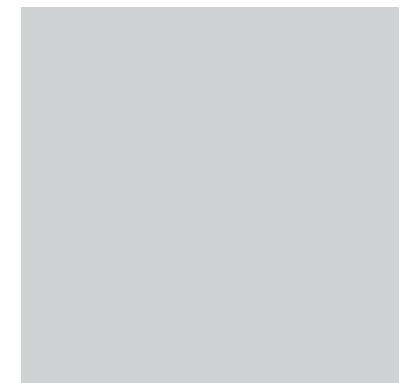
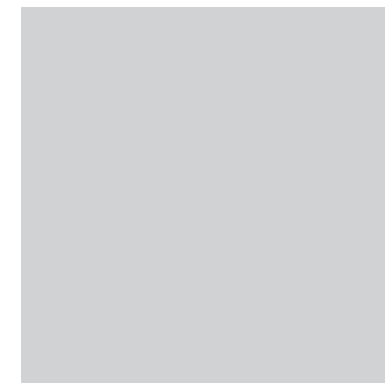
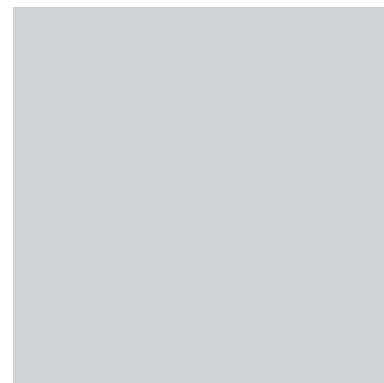
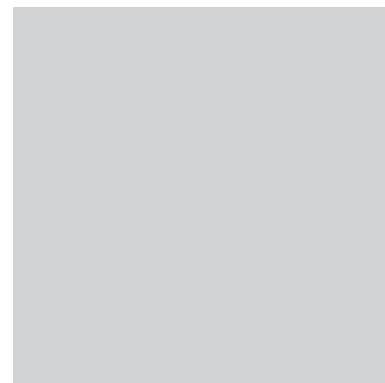
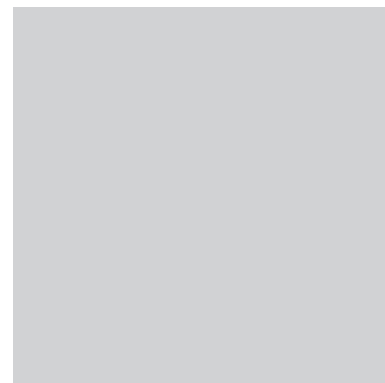
ECO-8014H-4




ECO-8014H-5



ECO-8053H



TECHNICAL INFORMATION		Anti Fatigue Mats
Classification	EN 685	33
Weight	ISO 8543	2800g+-100g/m ² for 12mm thickness
		3400g+-100g/m ² for 15mm thickness
		3700g+-100g/m ² for 20mm thickness
Thickness	ISO 1765	6mm-20mm
Tile dimension	EN 994	-
Dimension stability	ISO 2551	< 0.25%
Curvature	EN 434	< 2mm
Caster Chair	EN 985	Continuous use
Body voltage	ISO 1815	≤ 2.0KV
Thermal resistance	ISO 8302	Suitable for underfloor heating
Colour fastness to light	ISO 105-B02	> 6
Anti-slip property	EN13893	> 0.3
Reaction to fire	EN13501-1	Bfl-s1
Smoke density	ASTM E662	< 450
REACH test	1907/2006	NO.(6614)008-1228-R2
CE certification 	EN14041 EN15114	NO. EC.1282.OA140305.AYD0738
ISO 9001 certification	ISO 9001:2008	NO. 04514Q20096R0S
ISO14001 certification	ISO14001:2004	NO. 04514E20029R0S



Anji Yike Decoration Material Technology Co., Ltd.

Add: Bamboo industrial technology innovation park,

Xiaofeng town, Anji, Zhejiang, China

Tel: 86-572-5705325 Fax: 86-572-5216088

Web: www.ecofloorcovering.com